

New and Modern Two Bed

\$ 789,000



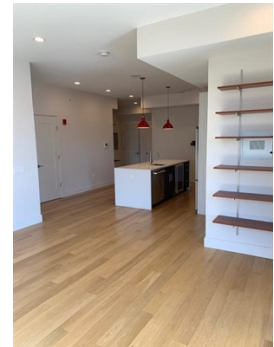
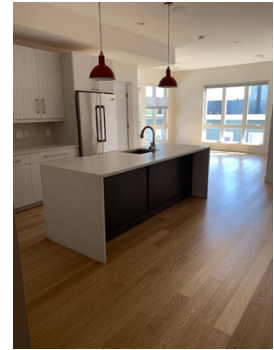
488 Dorchester Avenue, Unit 4E, Boston, MA 02127

- » Beds: 2 | Baths: 2 Full
- » MLS #: 72496962
- » Condominium | 1,050 ft²
- » More Info: 488DorchesterUnit4E.IsForSale.com



Erica Lockberg
 (339) 225-1342 (Cell)
 (781) 237-8787 (Wellesley Office)
erica@BHHSbaystatehomes.com
<http://www.bostontoburbs.com>


BERKSHIRE HATHAWAY
 HomeServices
 Town and Country Real Estate
 Berkshire Hathaway HomeServices
 310 Washington Street
 Wellesley, MA 02481
 (781) 237-8787



Remarks

Don't miss this 2016 new construction two bedroom, two bath modern penthouse unit which boasts a private outdoor deck and one direct access garage parking space. Enter the open concept unit and delight in the spacious kitchen/living room combo with access to the private deck. The bright and spacious master bedroom includes walk in closet and luxurious bath. The second bedroom is well proportioned and the unit includes a second hallway bath great for a roommate situation or entertaining. All this plus central ac, in unit laundry, in building gym, close to public transportation/highway access, the Seaport, and more. This unit is also located next to the upcoming Washington Village, a future development that will offer a mix of retail, public green space, and additional residential units.

